

St Clare's Catholic Church

## TWENTY-FIRST SUNDAY IN ORDINARY TIME

27<sup>th</sup> August 2017



### An inexhaustible fountain...

In today's second reading, St Paul speaks about the depths of the wisdom and knowledge of God. "Who could ever know the mind of the Lord?", he asks. He is reminding us that God's wisdom is an inexhaustible fountain. However much we know about God or learn from Him, there is always so much more. This fountain never runs dry, so we can return to it again and again, always able to receive more from the Lord. Let us thank God for sharing His wisdom with us and revealing Himself to us.



### FOCUS ON... care of God's creation

This Friday, 1 September, is the very first World Day of Prayer for Creation. Pope Francis has instituted this day of prayer, no doubt aware of the many challenges faced by our planet. In 2015 the Holy Father published an encyclical letter, *Laudato Si'*, on our duty of care for our common home. The title is taken from writings of St Francis, who had a great love and respect for all that God has made. Our patroness, St Clare, was one of the very early followers of St Francis, and so no doubt she shared this awareness of the gift of creation. As a parish, then, we have a special duty to care for the world that God has given us. But let's remember that this Friday is not a day of practical action, but of prayer. We thank God for the wonderful gift of creation, and pray that He may protect this world He has created and redeemed.



**Parish Priest:** Fr Andrew Allman **Deacon:** Rev. Fred Sanderson (retired)

**Presbytery:** Sharoe Green Lane, Fulwood, Preston, PR2 9HH

Tel: 01772 719604 e-mail: [enquiries@saintclares.co.uk](mailto:enquiries@saintclares.co.uk)

[www.saintclares.co.uk](http://www.saintclares.co.uk)

Lancaster RC Diocesan Trustees Registered – Registered Charity No. 234331

**St Clare's Primary School** – Headteacher: Mrs A. Charnley

Tel: 01772 787037 Fax: 01772 787016 e-mail: [head@st-clares.lancs.sch.uk](mailto:head@st-clares.lancs.sch.uk)

## MASSES THIS WEEK – Mass Book Page 120

Office: Psalter week 1; Sundays: Year A; Weekdays: Year I, Week 21

Date	Time	Occasion	Intention/Details
Saturday 26 <sup>th</sup>	6pm (vigil)	<b>Twenty-First Sunday in Ordinary Time</b>	Frances and Graham Templeton: Silver Wedding
	7pm (vigil)		<i>NeoCatechumenal Way</i>
Sunday 27 <sup>th</sup>	9:30am		People of the Parish
	6pm		Holy Souls
Monday	10am		St Augustine of Hippo
Tuesday	7pm	The Passion of St John the Baptist	John Bernard Holden RIP
Wednesday	9:15am		Roger & Florence O'Donnell RIP
Thursday	9:15am		Thomas Casey RIP
Friday	12noon		Gerry O'Neil RIP
Saturday	10am		Special Intention (GH)
Saturday 2 <sup>nd</sup> Sept.	6pm (vigil)	<b>Twenty-Second Sunday in Ordinary Time</b>	David Wilkinson RIP
	7pm (vigil)		<i>NeoCatechumenal Way</i>
Sunday 3 <sup>rd</sup>	9:30am		Sophia Morris RIP
	6pm		People of the Parish

**LATELY DEAD:** Please remember in your prayers all who have died, especially **Gerry O'Neil**, whose funeral took place this week, and **Sophia Morris**, who has died recently.

### EXPOSITION OF THE BLESSED SACRAMENT

Monday 8-9am, Tuesday-Friday 7-8am; Saturday 10:30am-noon.

**CONFESSIONS:** Saturday 11am-12noon, and on request.

**ROSARY:** Mysteries of Light prayed after 9:15am Mass, and before 12noon Mass on Fridays. These prayers are offered for the protection of life at all stages.

**ANGELUS:** said at 12noon on Fridays, at the start of Mass.

**ANNIVERSARIES:** Richard Singleton, Clare Southworth, Teresa Kirby, Thomas Geoghegan, Anthony McCambridge, Beatrice Lynch.

**POPE'S PRAYER INTENTIONS FOR AUGUST:** That artists of our time, through their ingenuity, may help everyone discover the beauty of creation.

**NARTHEX: WORK COMMENCING 4<sup>th</sup> SEPTEMBER:** Please read the information on the back of the newsletter, which explains how the church will continue to function during the work on the narthex. Further info and map in the porch.

**BANK HOLIDAY:** please note that Mass on Monday will be at 10am, and there will be no Mass in the hospital on Monday afternoon this week. Exposition on Monday morning will be 8-9am, instead of the usual time.

**FIRST FRIDAY HOLY HOUR:** This Friday at 7pm in the church.

**PARISH VISITING GROUP:** Do you know of someone who might appreciate a home visit? Please let us know if someone you know might be grateful of a bit of company from time to time. Or perhaps you yourself would welcome a chat with someone in the parish now and then. Speak to Mike Simpson or to Fr Andrew.

**200 CLUB:** August Winners: 1<sup>st</sup> - £165 No. 13 Steve Greenwood; 2<sup>nd</sup> - £99 No. 122 Philip Wilcock; 3<sup>rd</sup> - £66 No. 100 Sr Anne. To the Narthex Fund so far: £6,819.

**SPECIAL COLLECTION:** This weekend - Catholic Trust for England & Wales.

**ACN SYRIA APPEAL DONATION BOXES:** to take home and fill with small change, as we previously did with boxes for Hodovo. If you would like one of these boxes to use in your home, please collect one from the sacristy.

**INDIAN DINNER EVENING:** Friday 22<sup>nd</sup> September in the parish hall. Tickets will be available from next weekend. In aid of the parish Syria project.

**KEYBOARD PLAYERS:** Do you play a keyboard instrument? We will soon be in need of a keyboard player for Sunday 6pm Mass. Please speak to Fr Andrew.

**WEEK OF GUIDED PRAYER:** 1<sup>st</sup>-7<sup>th</sup> October. A chance to make a retreat in daily life, with time set aside each day for private prayer and a daily meeting with a spiritual director. Please contact Fr Ted at St Gregory's (930934) or Fr Peter at St Wilfrid's (555244) for enquiries. Poster and booking forms in the porch.

**COVENANT BOOKS:** during August, only open Thursdays, 10am-12:30pm.

**CLEATOR PILGRIMAGE: Our Lady, Seat of Wisdom,** 10<sup>th</sup> September. Mass and Blessing of the Sick, 3pm. Celebrant: Bishop Campbell OSA. Details on the poster.

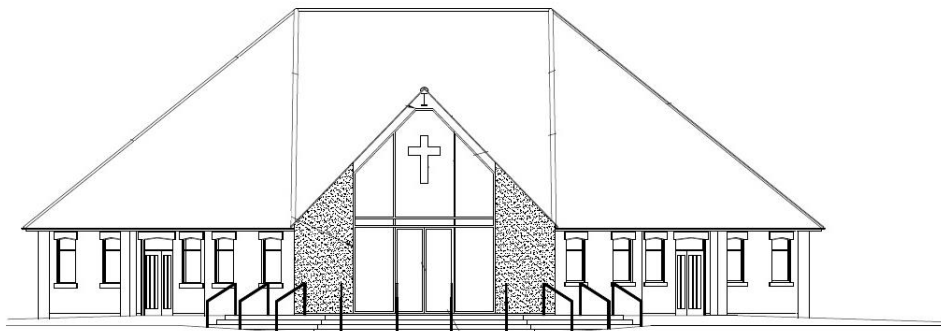
**SPIRITUAL SPA DAY FOR WOMEN:** 9<sup>th</sup> September, Cor et Lumen Christi, Wigton. A day for women to experience the renewing love of God. Call: 016973 45623 or 07516 075896 or visit [www.coretlumenchristi.org](http://www.coretlumenchristi.org)

**WOMEN TOGETHER IN THE DIOCESE OF LANCASTER:** Gathering at the Cathedral, 16<sup>th</sup> September, 1:30am-3pm. More information on the poster.

**LAST WEEK:** Attended: 470; Collection: £935.22; Assumption: £377.10.  
Thank you for your generosity.

## Events this week

Day	Time	What?	Where?
Wednesday	7:30pm	NCW Liturgy of the Word	Chapel
Friday	7pm	<b>First Friday Holy Hour</b>	Church



### **NARTHEX – CONSTRUCTION WORK STARTS 4<sup>th</sup> SEPTEMBER**

From Monday 4<sup>th</sup> September the builders will be on site, demolishing the porch before building the narthex. The project is expected to take 16 weeks, so should be finished (weather permitting) just before Christmas. The information below explains how St Clare's will function during the building work:

**The Church will remain open throughout**, and will be used as normal for Mass, both during the week and on Sundays. It will also be available for funerals and baptisms throughout. However, **access will be via the side chapel only**. We will enter and leave the church via the chapel, where hymn books, Mass books, newsletters etc. will be available.

**The Blessed Sacrament** will be reserved in the side chapel Monday-Friday (weekends in church as normal), as there is likely to be some noise in the church as the building work takes place. The side chapel will be open for private prayer.

**Toilet Facilities:** the toilet in the sacristy corridor will be open, only during Mass and other services. It must **only be accessed from the side chapel**, not via the double doors close to the font.

**The Car Park will also remain open**, however we will lose 5 or 6 spaces, as these will be in the area fenced off by the contractor. We are working closely with the school to minimise disruption during dropping off and picking up times.

**The Parish Hall** is unaffected by the work and will be in use as normal.

**A map** showing the layout of the site during the work is on display in the porch.